

Beaumont Leys Community
Meeting
20/7/11

Housing Services
Capital Investment

Total Spend

- We have £141,000 available to spend between Abbey and Beaumont Wards
- Last year Beaumont had the lions share
- This year looking for a 50:50 split

Planning and Consultation

IDEAS FOR SPENDING

- Local People
- Councillors
- Estate Management Officers

CORPORATE PRIORITY FILTER

Creating thriving, safe communities
Wellbeing and health
Talking up Leicester
Investing in skills and enterprise.
Investing in our children,
Reducing our carbon footprint
Planning for people not cars

Early Decisions

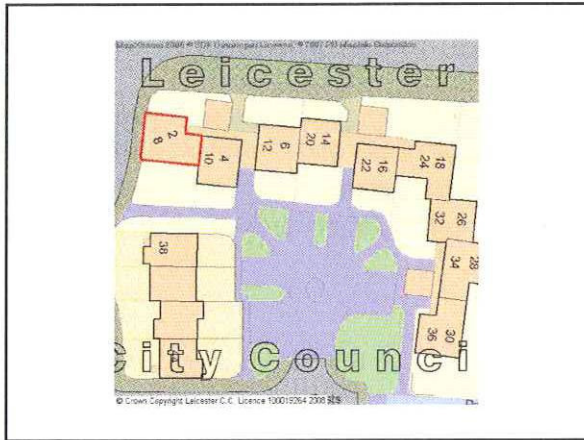
- Go back to all affected residents
- Check that our perceptions of need to do this **is actually theirs.**
- Get the works costed up

This year

- This year my job is to get the projects agreed at the Community meetings.
- (Previously projects went to Chair of Housing and Director)
- I have set out the projects as I see the priorities. (Tenant demand, VFM, ASB)
- We can fight over this!!

Project 1

- £24,628
- Blue gates Properties 2-36
- 90 meters of 6 foot metal railing
- Back gardens are open,
- Tenants vulnerable to peeping toms, smashed windows, fear of burglary
- See Map



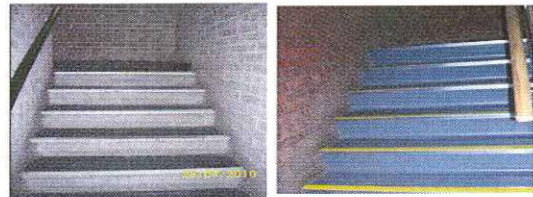
Project 2

- £2925
- Lime Grove Close
- Disabled man has difficulty opening security door from mobility scooter
- This project provides for automatic door opening
- Note there is no alternative funding for this via DDA, Social Care

Project 3

- Butterwick Drive
- £30,000- £60000
- Next phase(s) in established project.
- Replace wooden slats with UPVC
- Replace flooring, upgrade lighting
- Paint
- Widen pathways
- Popular with residents, improves letability
- Ongoing commitment

Before and after



Before and after



Before and after



Project 4.

- 32-70 Oronsay Rd
- £13,355

Ground Works

- 32-70 Oronsay rd - removal of shrubs, removal of stone ,removal of tree, supply topsoil, lay turf cost £2,457.09
- 34-38 Oronsay rd- removal of shrubs, supply and spread topsoil to make up low areas, lay turf cost £1,350.15
- 40 Oronsay rd - removal of shrubs, supply and spread topsoil to make up low areas,lay turf cost £622.16
- Side of Blakesly Walk - removal of tree, shrubs and scrub, grade, rotorvate area. Turf £5753

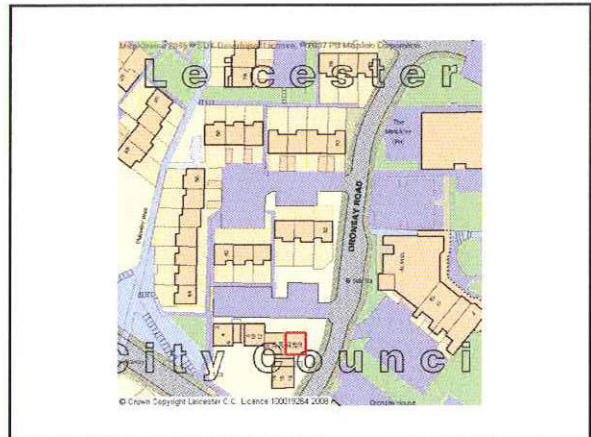
£10,182

Railings

- Railings to block access (l@1m & 1@3m) £1085
- 24m @ £87 Kneerail land adj, No32 £2088

£3173

- Strong demand from Ward Councillors and local people



Project 5.

- £7797
- Rear of properties 1-7 Lomond Crescent
- Remove 2-3 Trees
- Tarmac & Turf to stop mud slip to adj properties
- Protect public from slippages



Project 6

- To demonstrate the huge demand I include the following:
- Over the years these blocks have had security door installation but no internal works. Residents have requested that we look at the internal appearance of the block and improve it.
-
- 2 - 8 Calder Close Painting and flooring £6064.78
- 10 - 16 Calder Close Painting And flooring £13645.71
- 44 - 60 Calder Close Painting and flooring £13645.71
- 2 - 8 Laxford Close Painting And flooring £6064.78
- 92 - 102 Portmore Close Painting And flooring £9097.17
- 104 - 110 Portmore Close Painting and flooring £6064.78
- 1 -17 Lime Grove Painting And flooring and block paving and Tarmac £14,464.13

Choices Choices Choices

Project & Cost	Running Total
• Railings £24628	• £24,628
• Auto door £ 2925	• £27,533
• Butterwick £30000	• £57,533
• Oronsay £13355	• £70,888
• Lomond £ 7797	• £78,685
• Project 6 £69000	• £147,685 Nowt for Abbey!